



---

# LA FUENTE

Marbella

FLOOR PLANS | PLANOS

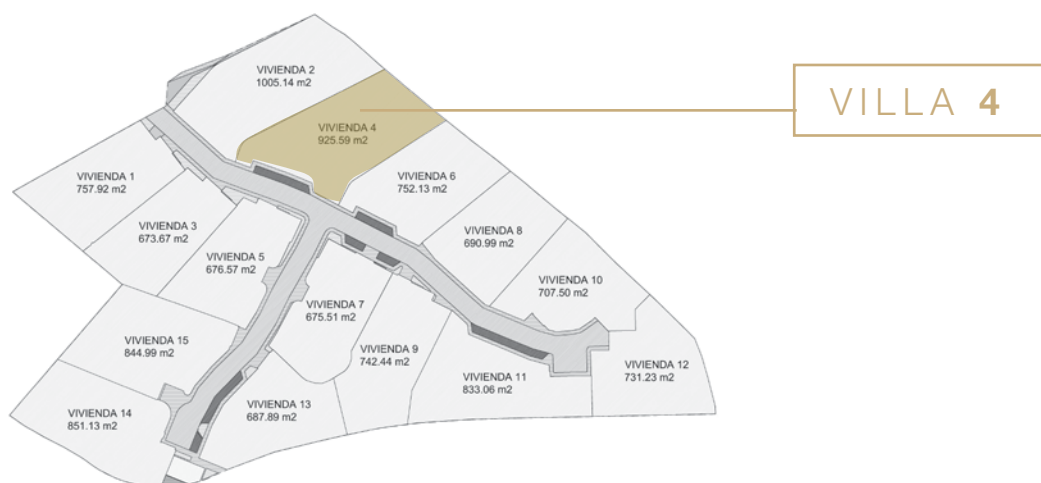


VILLA 4

VILLAS ROMERO

# VILLA 4 ROMERO

4 BEDROOMS 4 *DORMITORIOS*  
4 BATHROOMS 4 *BAÑOS*



## INTERIOR AREAS / *ÁREA INTERIOR*

HALL / <i>RECIBIDOR</i>	6,72 m <sup>2</sup>
LIVING ROOM / <i>SALÓN</i>	39,31 m <sup>2</sup>
DINING & KITCHEN / <i>COMEDOR Y COCINA</i>	35,53 m <sup>2</sup>
MASTER SUITE / <i>SUITE PRINCIPAL</i>	41,71 m <sup>2</sup>
BEDROOM SUITE 1 / <i>DORMITORIO SUITE 1</i>	22,41 m <sup>2</sup>
BEDROOM SUITE 2 / <i>DORMITORIO SUITE 2</i>	25,95 m <sup>2</sup>
BEDROOM SUITE 3 / <i>DORMITORIO SUITE 3</i>	21,65 m <sup>2</sup>
LOWER LEVEL / <i>SOTANO</i>	160,60 m <sup>2</sup>

## EXTERIOR AREAS / *ÁREA EXTERIOR*

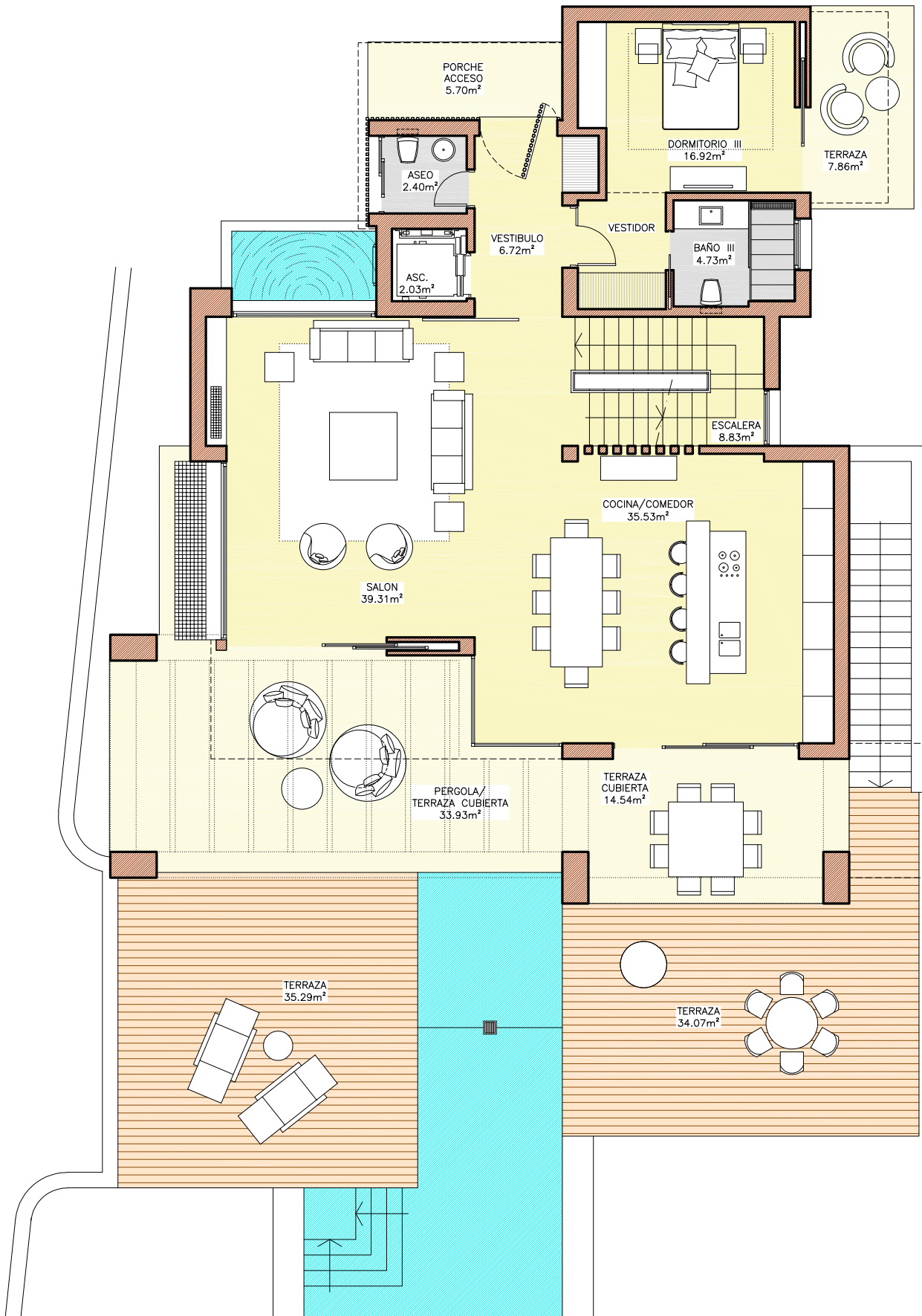
COVERED TERRACE / <i>TERRAZA CUBIERTA</i>	62,11 m <sup>2</sup>
OPEN TERRACE / <i>TERRAZA DESCUBIERTA</i>	162,23 m <sup>2</sup>
SWIMMING POOL / <i>PISCINA</i>	42,08 m <sup>2</sup>
SOLARIUM / <i>SOLÁRIUM</i>	70,85 m <sup>2</sup>
GARAGE / <i>GARAJE</i>	31,90 m <sup>2</sup>

## TOTAL AREAS / *ÁREA TOTAL*

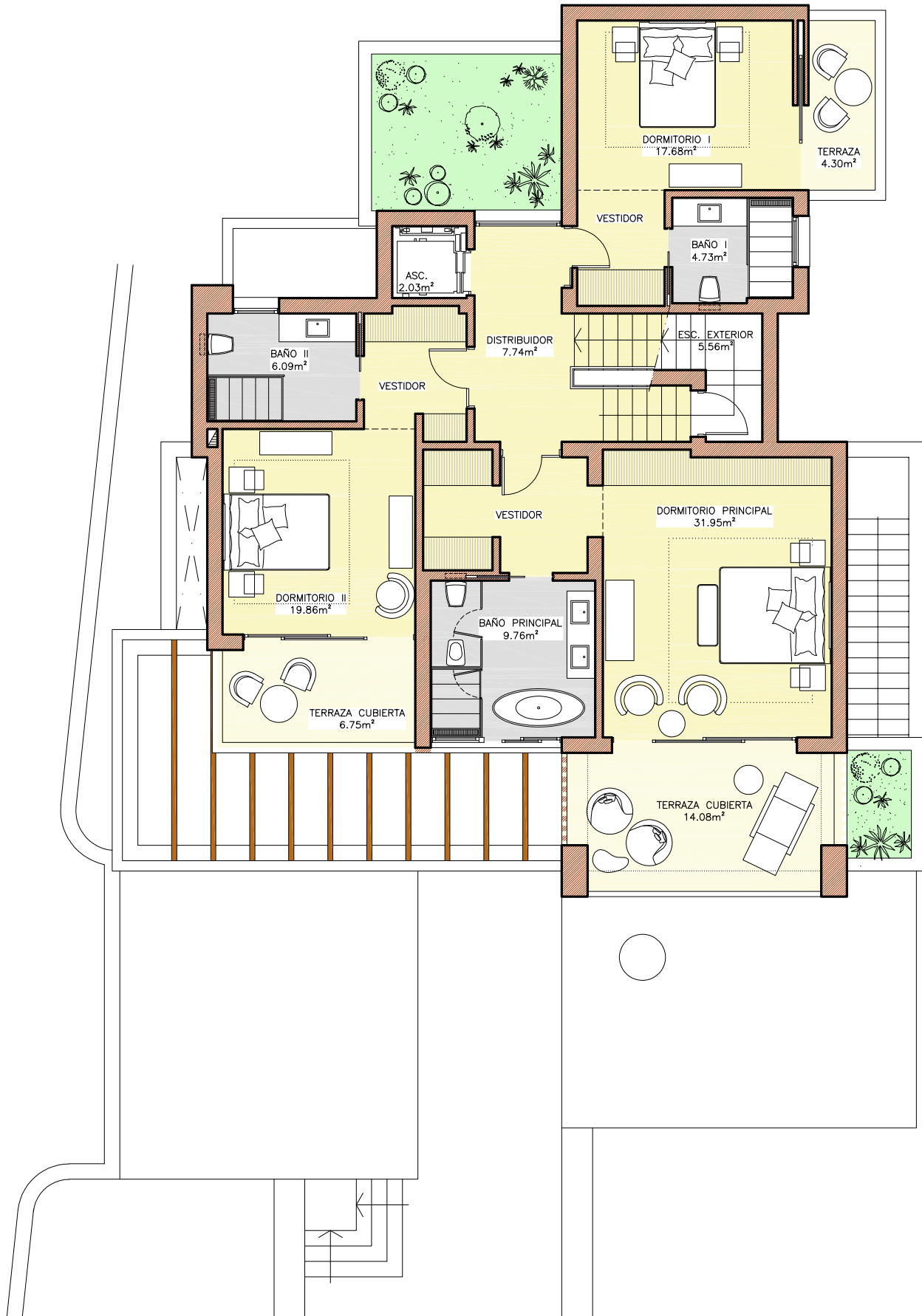
TOTAL LIVING AREA / <i>SUPERFICIE HABITABLE TOTAL</i>	506,46 m <sup>2</sup>
TOTAL BUILT AREA / <i>SUPERFICIE TOTAL CONSTRUIDA</i>	730,80 m <sup>2</sup>
PLOT / <i>TERRENO</i>	925,59 m <sup>2</sup>

These plans are for information purposes only and non-contractual.  
*Estos planos son de carácter informativo y no contractual.*

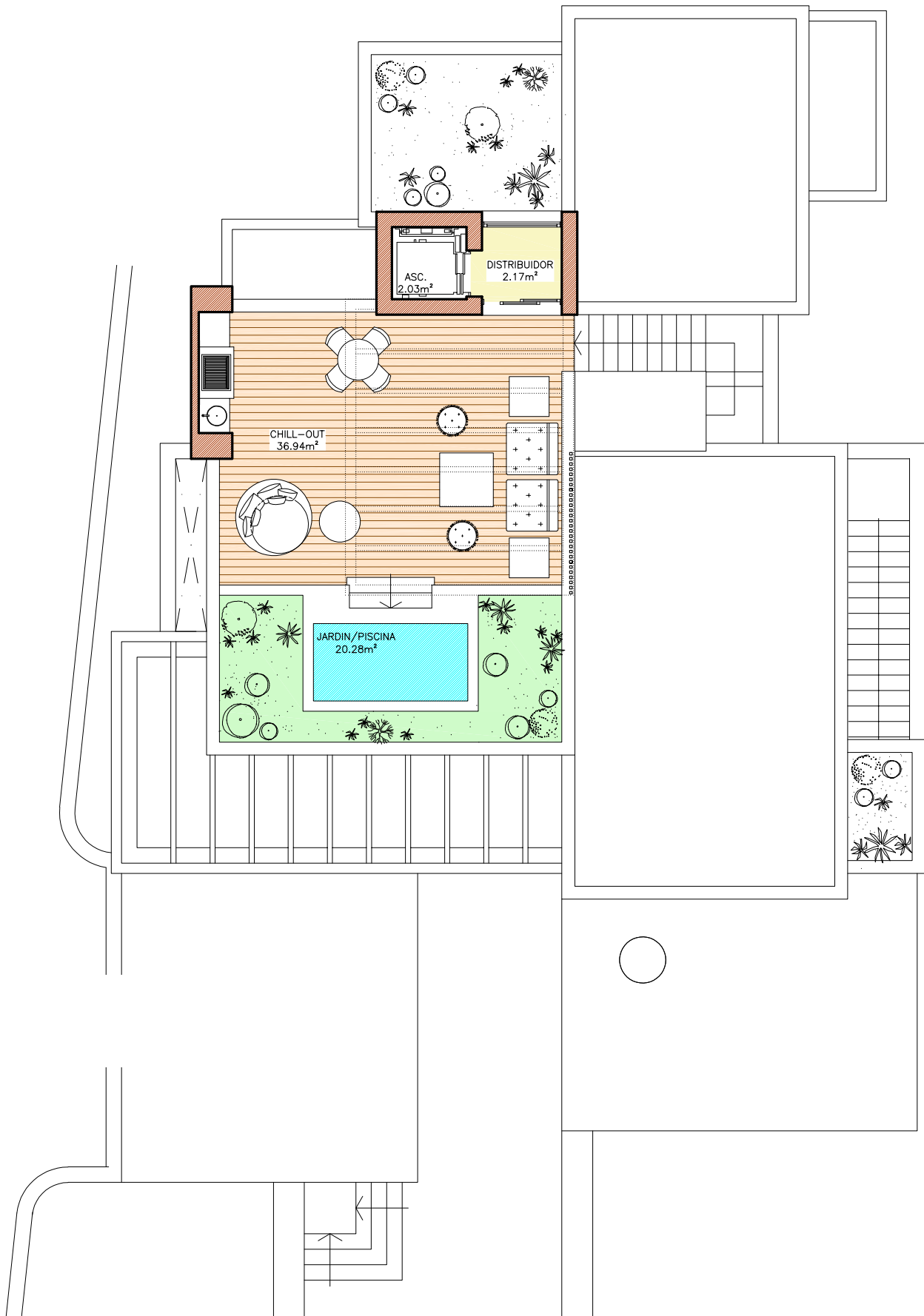
# GROUND FLOOR PLANTA BAJA



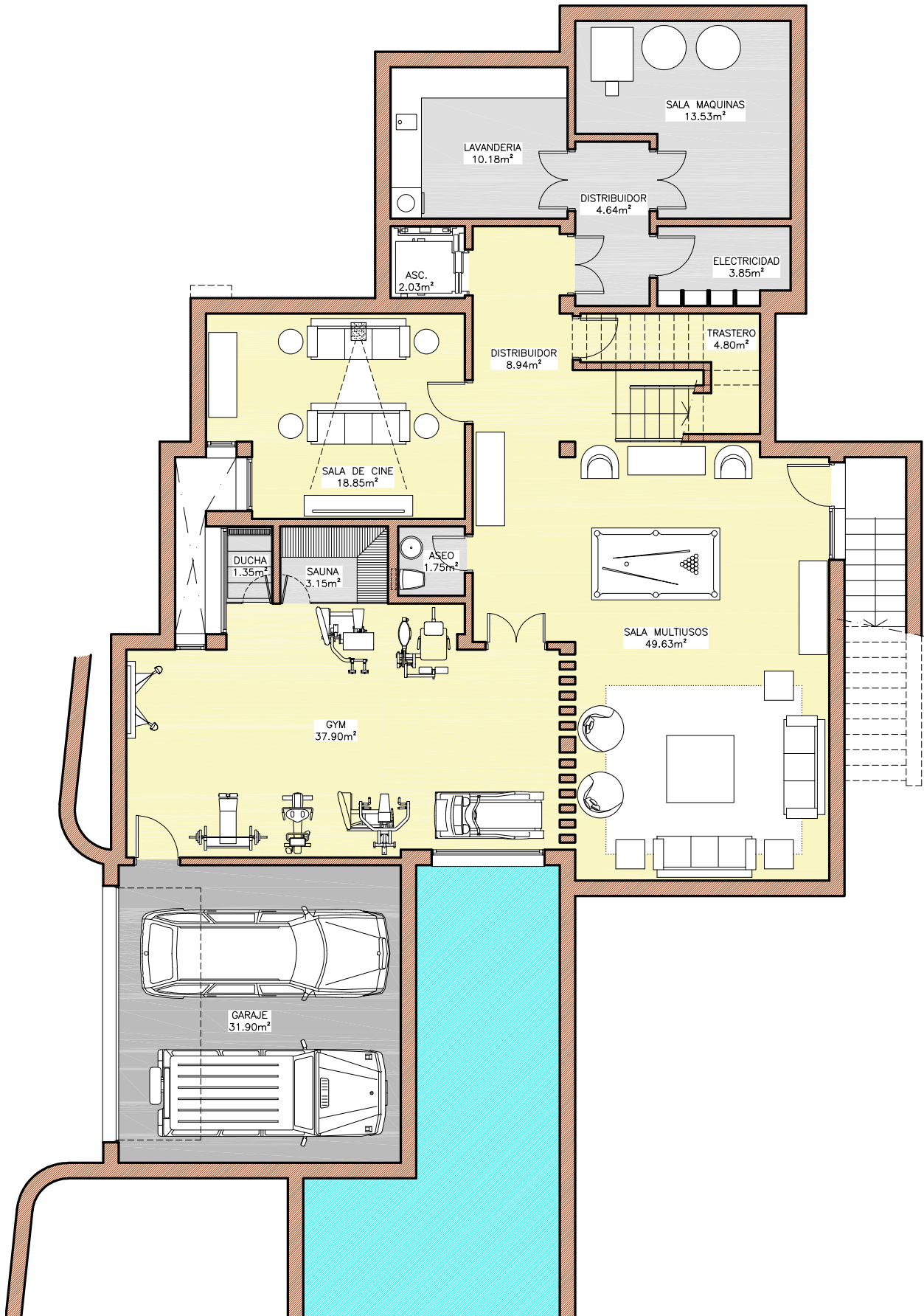
# FIRST FLOOR PLANTA ALTA



# SOLARIUM SOLÁRIUM



# BASEMENT PLANTA SOTANO





---

LA FUENTE

Marbella

**La Fuente Sales Office:**

C/ Vigil de Quiñones 10 · 29602 Marbella

Tel.: +34 951 492 549 · Mob.: +34 621 273 292

lafuente@engelvoelkers.com · www.lafuentemarbella.com



**ENGEL & VÖLKERS**

